



# Bags

A silhouette of a woman in a business suit and high heels, pulling a rolling suitcase. She is standing on a tarmac with an airplane and airport equipment visible in the background. The scene is captured in a dramatic, low-key lighting style.

## Style

### **You will always want the right carry bag for the right circumstance.**

For work or play, **MAXUM** has every type of carry bag styled for men, women and children that you can think of and perhaps some types of bags you've never considered before.

What type of bag do you need...

- ✓ For the consummate professional we have multiple styles of carry-on luggage, lap-top bags, conference satchels and more that define the professional executive.
- ✓ For the active lifestyle that requires style you'll find our backpacks, sport bags and drawstring bags provide unique colours and durable quality to suit your needs.
- ✓ Align your brand and your carry bags to promotional campaigns, conferences or for your employees.
- ✓ Be the change you want to see in the world, our Eco-friendly range of carry bags reflects our continuing commitment to environmental sustainability. We've expanded this range to help promote environmental usage of durable eco-friendly carry bags that biodegrade naturally.

**Also see our compendium section to match your style.**

organised



## ► Executive trolley backpack

1680D nylon with metal look wheels, aluminium trolley handle, padded laptop compartment, extendable waist, front pocket with organiser, lined handle and (removable) shoulder straps. Size: 500 x 360 x 250mm.

Code: S2101

**XDDESIGN®**





## ▶ Cabin trolley set

Trolley and document bag, certified carry-on luggage size. Quality 600D nylon, 3 fully lined compartments with lockable zipper on main compartment.

Size: Trolley Bag 500 x 360 x 170mm.

Document Bag 390 x 280 x 130mm.

Code: S2120

**XDDESIGN®**

versatile



## ▶ Trolley shopper

Strong, durable and easy to manoeuvre, this 2 wheeled 600D nylon shopping trolley has an outside pocket with zip and folds flat for storage. Size: 600 x 145 x 330mm.

Code: S2125





## ► Ladies hamilton laptop bag

Premium quality materials combined with elegant style make this award winner a travel companion for life. Water repellent canvas with nylon lining, padded laptop compartment, 3 compartments with organizer, smart pocket for mobile phone and stylish closure with magnetic buckles. Registered award winning design®.

Size: 430 x 320 x 110mm.

Code: XD765

**XDDESIGN®**



## ► Executive laptop bag

1680D nylon with padded 15" laptop compartment, front pocket with organiser function, padded handles at two sides and adjustable shoulder strap. Size: 410 x 330 x 140mm.

Code: S2100

**XDDESIGN®**





## ▶ Seminar satchel

600D nylon document satchel with two tone trim, single large zipped compartment, padded handle and adjustable shoulder strap. Size: 38 x 25 x 7 cms.

**Code: S2209C**

on the go

## ▶ Koeskin business satchel

Premium koeskin front flap over design satchel with large expanding main compartment, front zipped pocket, internal organiser and adjustable shoulder strap. Size: 39 x 30 x 10cms.

**Code: S1050K**





## ► XD Hard shell trolley bag

Black 1680D material, ABS in grey, 150D grey lining, PVC handle & lockable telescope trolley system. 4 wheels, 1 main compartment & zipper pocket on front & back. Registered design.  
Size: 38 x 21 x 55cms.

**Code: XD755**

**XDDESIGN®**



# Excel

The ultimate combination of both style and convenience, in premium materials to create a genuine retail quality range for the conference and business market, yet at very competitive pricing.

## ▶ Excel conference backpack

1000D nylon backpack with padded adjustable back straps, two zipped front pockets, two large main zipped compartments, multiple pocket organiser and matt silver fittings.

Size: 320 x 120 x 450mm.

**Black Code: S2106**

**Aluminium Code: S2107**



robust



## ▶ Excel flap over laptop bag

Flap over bag with laptop compartment, 500D jacquard nylon in gunmetal with black trim, with organiser under flap & front zipped pocket. With removable shoulder strap.

Size: 38 x 28 x 10cms

Code: S2111



quality



## ▶ Excel conference satchel

Gunmetal 500D jacquard nylon with black trims, one main zipped compartment, zipped outer pocket, with organiser and removable shoulder strap.

Size: 40 x 30 x 8cms.

Code: S2110



## ▶ Excel zip top satchel

1000D nylon padded satchel, two zipped front pockets, matt silver fittings and adjustable padded shoulder strap.

Size: 400 x 300 x 60mm.

**Black Code: S2104**

**Aluminium Code: S2105**





## ▶ Excel shoulder satchel

1000D nylon flap satchel, zipped front pocket, multiple pocket organiser, matt silver fittings and adjustable padded shoulder strap.

Size: 400 x 300 x 55mm.

**Black Code: S2102**

**Aluminium Code: S2103**





## ▶ Excel computer bag

1000D nylon zip top padded bag, one front zipped pocket, one side opening pocket, padded laptop compartment, multiple pocket organiser, matt silver fittings and adjustable shoulder straps.

Size: 400 x 300 x 60mm

**Black Code: S2108**

**Aluminium Code: S2109**





## ► Eclipse backpack

Durable 600D polyester backpack with two zipped compartments & adjustable shoulder straps in range of fun colours. Size: 37 x 29 x 17cms.

**Blue Code: S1040BL**

**Pink Code: S1040PI**

**Red Code: S1040R**

**Green Code: S1040G**

**Orange Code: S1040O**

**Purple Code: S1040PU**

**Black Code: S1040BK**

**Yellow Code: S1040Y**



# What is non woven polypropylene and is it recyclable?

## **Non woven polypropylene is the new miracle fabric.**

It's recyclable plastic fabric often used to make promotional bags. It is a practical fabric because it is strong and extremely lightweight, convenient to carry as well as inexpensive to ship. The fabric is comfortable and soft and commonly used to make surgical masks and gowns.

Non woven polypropylene bags promote a greener earth as they are reusable, easy to clean and recyclable. These bags can be quickly wiped clean, and some of them are machine washable in cold water if they are drip dried.

Most non woven polypropylene bags are made of 5-type recyclable plastic. Reusing and recycling them could save plastic bags from sitting in a landfill.

After the non woven polypropylene bags have been recycled, they may even be made into new bags again.

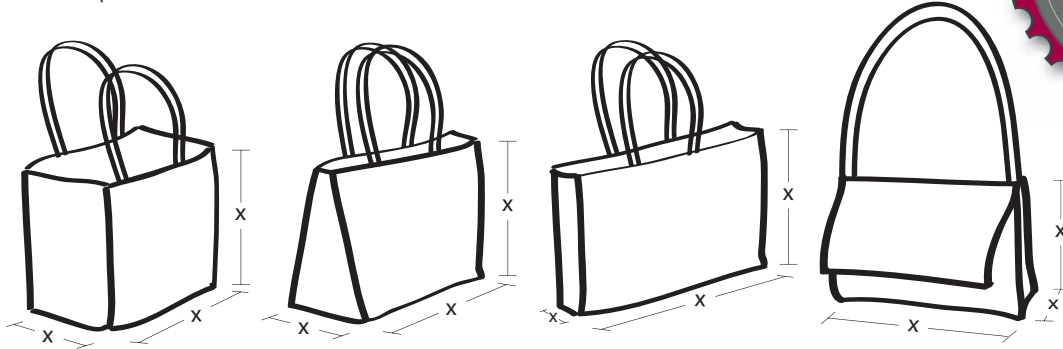


# Create your own Eco Bag

Take these **EASY** steps to create your own design, style and colour bag  
From 100% recyclable PP, PET, Non Woven material

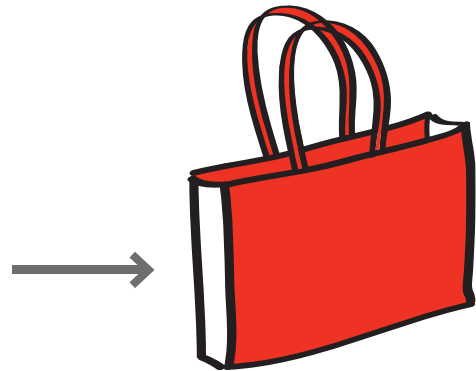
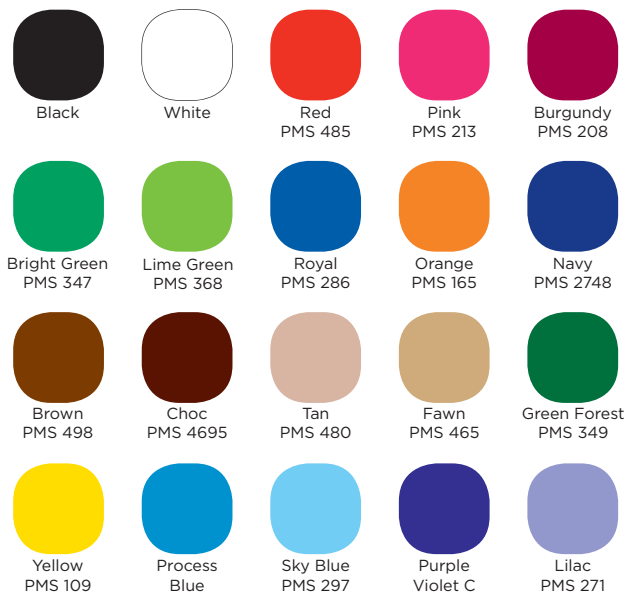
## 1 Decide your bag **STYLE** and **SIZE!**

Large/small gusset, long/short straps, satchel, flap-over, or a wine bag - any style, any size - you decide? Think **OUTSIDE** the box to make it unique!



## 2 Select your **COLOUR!**

Front/back the same and sides/straps different, OR different/same straps, different bag colour? - 'YOU' decide.



## 3 Print - your **LOGO** or **CUSTOM DESIGN/PATTERN!**

Logo on one side/two sides/four sides or an all over print design?



PRODUCTION LEAD TIME - 10 WEEKS



## ► Non woven conference bag

75gsm non woven document bag, with main zipped compartment and business card window on back.

Size: 42 x 29 x 8cms.

**Black/Grey Code: S1020**

**Black/Red Code: S1021**

**Black/White Code: S1022**

**Black/Blue Code: S1023**

**Black/Black Code: S1024**



## ► Cotton conference bag

8oz/140 gram natural cotton bag, with zipped main compartment and business card window on back.

Size: 42 x 29 x 8cms.

**Code: S1025**



## ► A4 non woven bag

Made from recycled material, 80gsm with woven webbing straps.

Size: 380 x 278mm

**Code: S1014BK**





## ▶ Non woven shopper

Made from recycled material, 80 gsm with reinforced straps and gusset.  
Size: 430 x 380 x 100mm

Kelly Green: S1018KG	PMS 347
Yellow Code: S1018Y	PMS 116
Red Code: S1018R	PMS 185
Lime Code: S1018L	PMS 376
Royal Blue Code: S1018RB	PMS 287
Silver Code: S1018S	PMS 429
Dark Green Code: S1018DG	PMS 348
Black Code: S1018B	PMS Black
Navy Blue Code: S1018NB	PMS 289
Orange Code: S1018O	PMS 021
White Code: S1018W	PMS White



## Eco jute bags

Made from Jute a fast growing natural plant fibre, **MAXUM** Jute Bags are strong, re-usable and naturally green.

Jute is one of the strongest natural fibres, which are carbon-dioxide neutral and naturally decomposable.

**It's an extremely Eco friendly textile.**

Choose from our range of stock options, or create your own custom design bag.



### ► A4 jute shopper bag

100% natural jute with plastic laminate inner and webbing handles.

Size: 380 x 275mm (no gusset)

Code: **S3009**



naturally



### ► Large jute tote

Black and white contrast jute bag with laminated inner, with black cotton rope handles.

Size: 35 x 32 x 20cms.

Code: S3310



### ► Medium jute tote

Black and white contrast jute bag with laminated inner, with black cotton rope handles. Size: 35 x 32 x 10cms.

Code: S3311





## ► Contrast eco jute bag

Heavyweight material made from 100% natural materials. Black reinforced handles and cotton front pocket for ease of branding.  
Size: 450 x 380 x 165mm. Print Dimensions: 200 x 200mm.  
**Code: S3000**



green

## ► Jute shopper bag

Heavyweight material made from 100% natural materials. Reinforced handles.  
Size: 450 x 380 x 165mm.  
Print Dimensions: 200 x 200mm.  
**Code: S3001**





## ► Jute carry-all

100% natural jute with plastic laminate inner, contrast gusset and webbing handles.

Size: 400 x 370 x 150mm.

**Black Code: S3002**

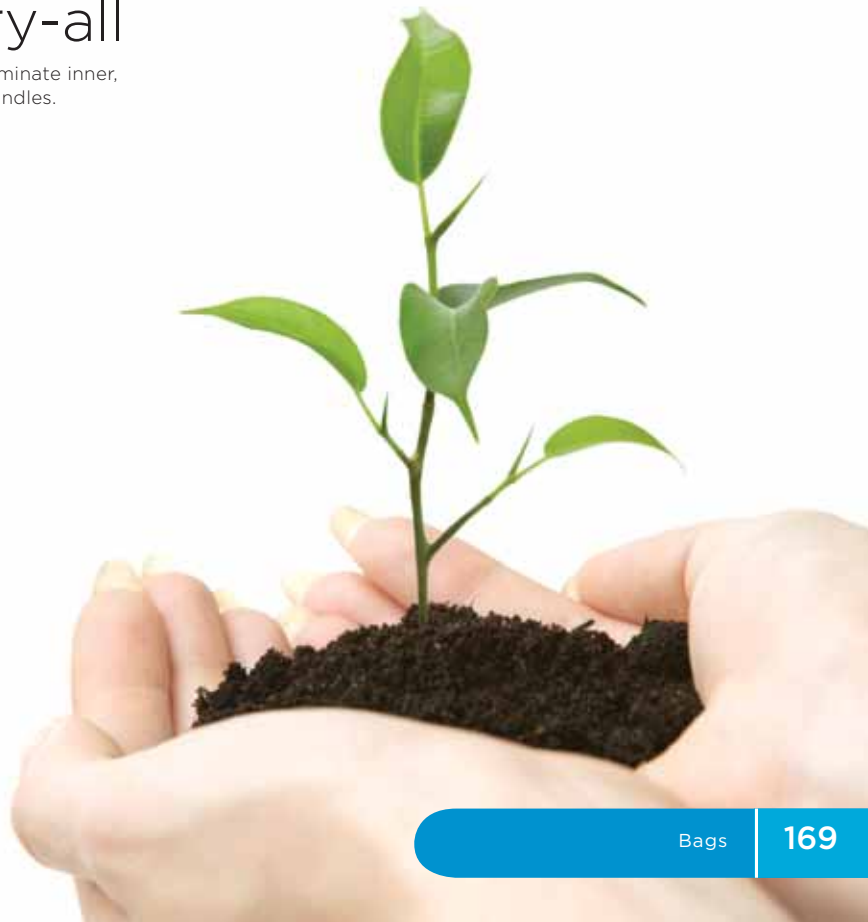
**Blue Code: S3003**

**Green Code: S3004**

**Red Code: S3005**



strong





## ► Explorer sports bag

Quality sports bag with heavy duty 1680D nylon colour trim and 600D body, multiple pockets, 2 mesh bottle holders, shoulder strap and base board. Size: 530 x 300 x 260mm.

**Blue Code: S2045BL**  
**Black Code: S2045BK**  
**Red Code: S2045R**  
**Green Code: S2045G**



## ▶ Trolley mate

Eliminates the need for plastic bags!

Efficient and convenient reusable shopping cart bag, 420D Polyester with PU backing, reinforced aluminium sides, black hooks and webbing carry handles. Size: 550 x 300 x 400mm.

**Blue Code: S2130**

**Black Code: S2135**



## ▶ Cooler hamper

600D polycanvas hamper with 420D nylon cross weave and external bottle holders.

Size: 260 x 310 x 190mm

**Blue/Black Code: C5000**

**Silver/Black Code: C5001**



## ▶ Drawstring bag

210T bag with metal eyelets and black draw string.  
Size 470 x 375mm

**Red Code: DS150R**

**Silver Code: DS150S**

**Royal Blue Code: DS150RB**

**Black Code: DS150B**

**Yellow Code: DS150Y**

**Orange Code: DS150O**

**Navy Code: DS150N**

**Lime Code: DS150G**

**White Code: DS150W**

eye catching